



N



N Series 50 ohms / 75 ohms coaxial connectors are high performance screw coupled suited for critical application and adverse environments. These connectors have a sturdy constitution and could be used at high frequencies upto 11 GHz.

The Sricom range of N connectors cover different cable and chasis mounting styles; in addition, connectors with special cable entry features and variations in mounting styles could be supplied against specific requirements.

Sricom N Connectors are manufactured to ensure conformity to joint service specifications J 52402 in terms of Electrical performance and mating face requirements.

They are fully intermatable with connectors manufactured to meet US specifications MIL – C 39012.

Connectors are available in both 50 and 75 ohms impedance; N series 50 ohms and 75 ohms connectors are intermatable.

MATERIAL

Body & Body Components	Extruded Brass
Centre Contact Male	Extruded Brass
Centre Contact Female	Beryllium Copper
Dielectric	PTFE
Clamp Gaskets	Silicone Rubber
Crimp Ferrule	Copper

MECHANICAL

Mating	5/8" UNEF-24 Threaded coupling
Cable Affixment	Solder or Crimp
Cable Retention	Clam 334 N minimum

TECHNICAL SPECIFICATIONS

ELECTRICAL

Impedance	50 / 75 ohms
Frequency Range	0 – 11 GHz @ 50Ω 0 - 15 GHz @ 75Ω
Voltage Rating	1500 V Peak
Insulation Resistance	5000 Meg Ohms (Min)
Centre Contact Resistance	1.0 Milli ohms (Max)
Outer Contact	0.2 Milli ohms
Braid to Body	0.05 Milli ohms
Insertion Loss	0.15 dB maximum at 10 GHz
Dielectric Withstanding	2500 Volts RMS at Sea level
VSWR	1.3 : 1 Max 0 - 11 GHz @ 50Ω 1.2 : 1 Max 0 - 11.5 @ 75Ω

ENVIRONMENTAL

Temp. Range	– 65°C to + 85° C JSS 50101
Shock	JSS 50101 – Test No. 12 MIL Std – 202 Method 213
Vibration	JSS 50101 – Test No. 23 MIL Std – 202 Method 204 (Test Cond. B)
Temp. Cycling	JSS 50101 – Test No. 20 MIL Std – 202 Method 102 (Test Cond. C)

FINISH

Body	Silver / Nickel
Centre Contacts	Gold

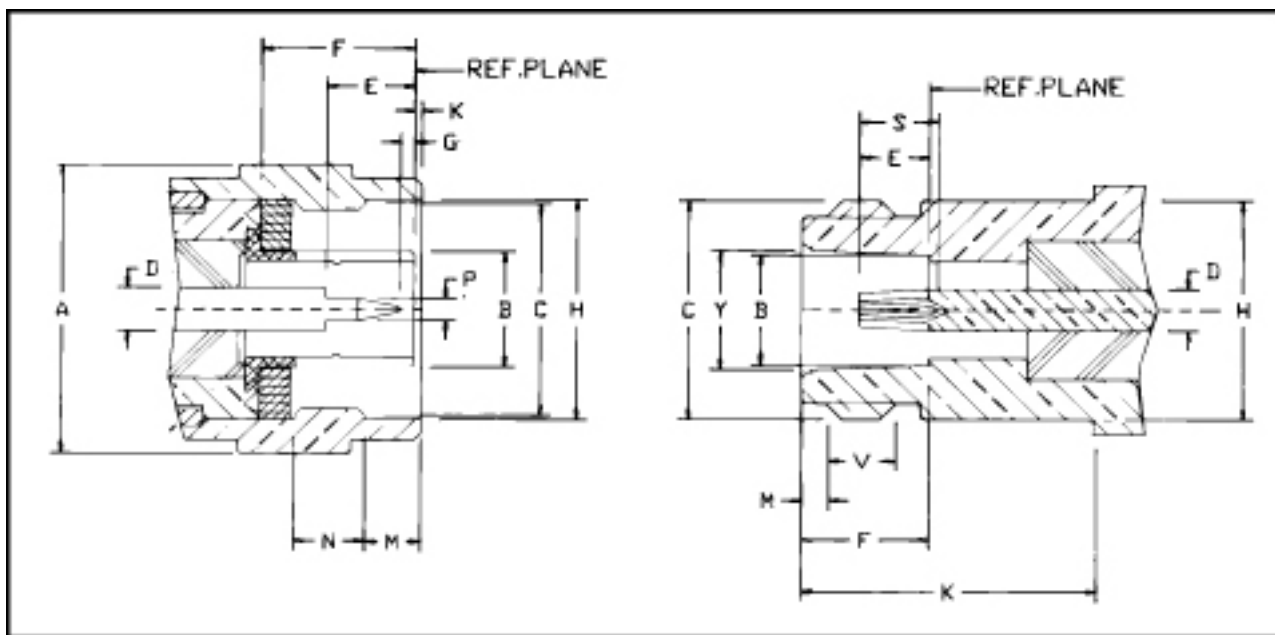


Interface Dimensions – N Series

N

PLUG

JACK



LTR (dim. of)	PLUG		JACK	
	MIN	MAX	MIN	MAX
DIA A	–	21	–	–
DIA B	–	8.38	8.03	8.13
C	5/8"-24 UNEF - 2B		5/8"-24 UNEF - 2A	
DIA D	3.02	3.15	3.02	3.15
E	5.33	5.84	4.75	5.26
F	10.11	10.46	9.04	9.19
G	0.08	–	–	–
DIA H	16.0	–	–	15.93
K	0.41	1.52	10.72	–
M	4.01	4.27	1.19	1.96
N	4.50	5.00	–	–
DIA P	1.60	1.68	–	–
S	–	–	5.33	–
DIA Y	–	–	8.53	8.74
V	–	–	4.37	5.13

ALL DIMENSIONS ARE IN MM



CONTENTS

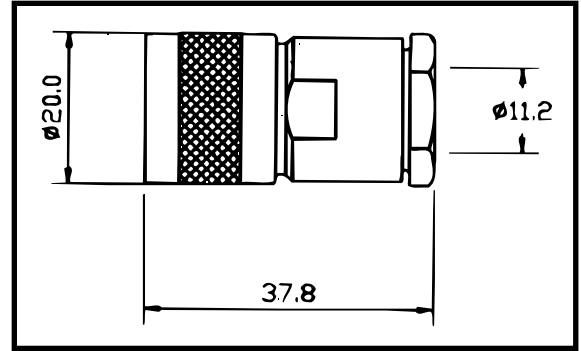
SEARCH

PREVIOUS

NEXT

**Straight Plug
Clamp Type**

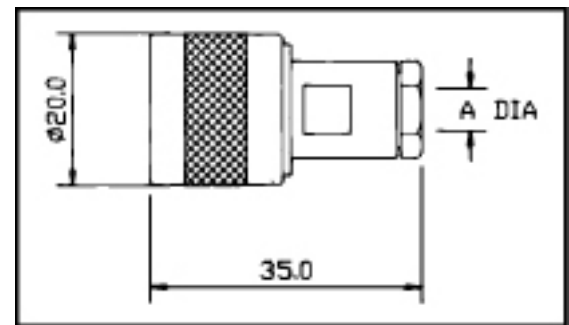
N



Order Code	US-MIL No	Impedance Ohms	Cable Group RG/U	A Dia (Max)
SC3 M 01	UG 21 / U	50	165, 213, 214, 215, 225	11.2

For Cable Assembly Refer Fig. C 01

**Straight Plugs
Clamp Type**

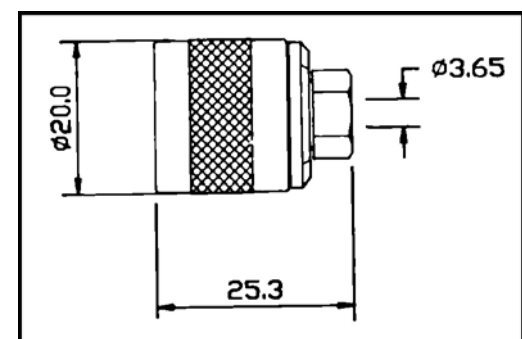


Order Code	US-MIL No	Impedance Ohms	Cable Group RG/U	A Dia (Max)
SC3 M 02	UG 536 / U	50	55, 58, 141, 142, 223, 303, 400	5.6
SC3 M 04		50	174, 188, 316	2.9

For Cable Assembly Refer Fig. C 02

**Straight Plugs for
Semi rigid Cable**

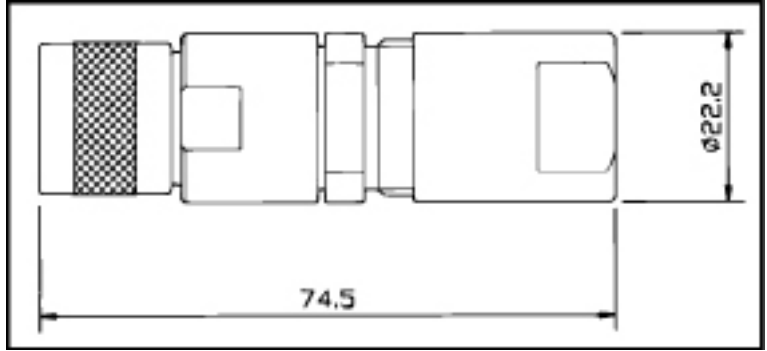
Order Code	Impedance Ohms	Cable Group RG/U
SC3 M 03	50	402



For Cable Assembly Refer Fig. C 03



Straight Plug

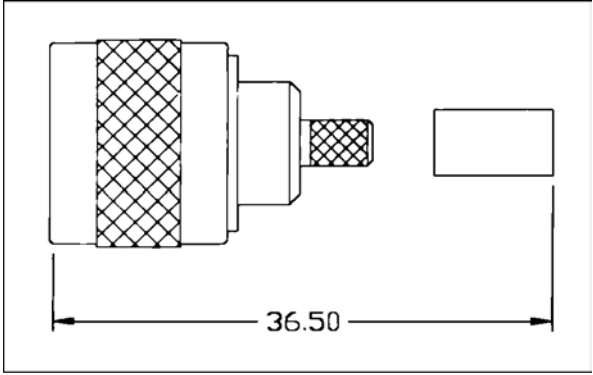


N

Order Code	US-MIL No	Impedance Ohms	Cable Group RG/U
SC3 M 06	UG 204 / U	50	217

For Cable Assembly Refer Fig. C 04

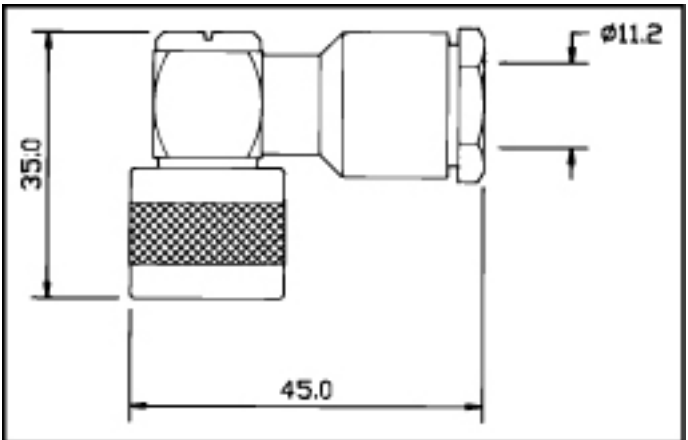
Straight Plug Crimp Type



Order Code	Impedance Ohms	Cable Group RG/U
SC3 M 13	50	55, 58, 141, 142, 223, 303, 400

For Cable Assembly Refer Fig. C 15

Right Angle Plug Clamp Type



Order Code	US-MIL No	Impedance Ohms	Cable Group RG/U
SC3 A 01	UG 594 / U	50	165, 213, 214, 215, 225

For Cable Assembly Refer Fig. C 05

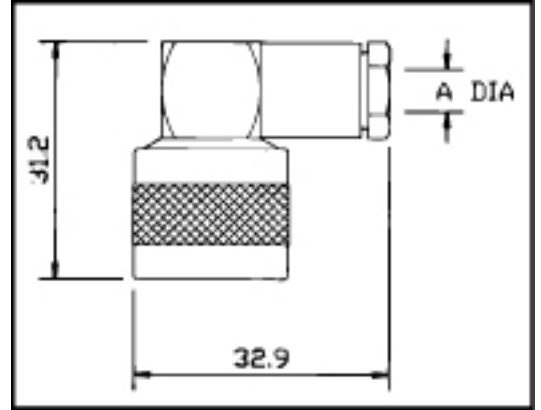


**Right Angle Plug
Clamp Type**

N

Order Code	Impedance Ohms	Cable Group RG/U	A Dia
SC3 A 02	50	55, 58, 141, 142, 223, 303, 400	5.6

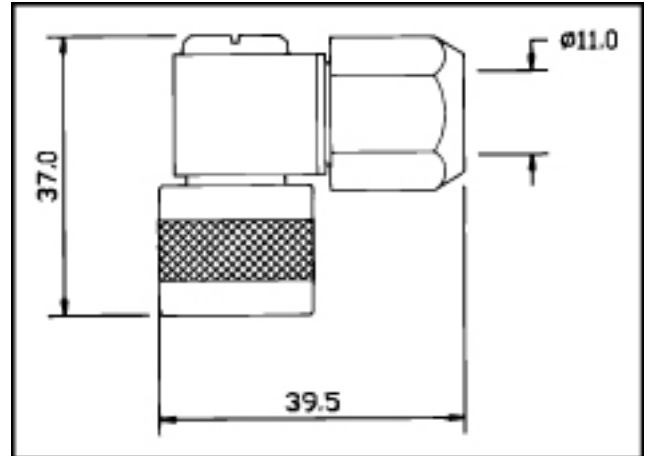
For Cable Assembly Refer Fig. C 06



**Right Angle Plug
Slotted Braid Clamp Type**

Order Code	Impedance Ohms	Cable Group RG/U
SC3 A 03	50	165, 213, 214, 215, 225

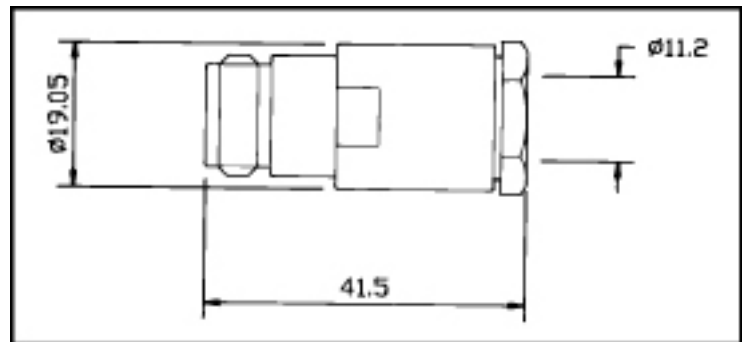
For Cable Assembly Refer Fig. C 07



**Straight Jack
Clamp Type**

Order Code	US-MIL No	Impedance Ohms	Cable Group RG/U
SC3 SR 01	UG 23/U	50	165, 213, 214, 215, 225

For Cable Assembly Refer Fig. C 08





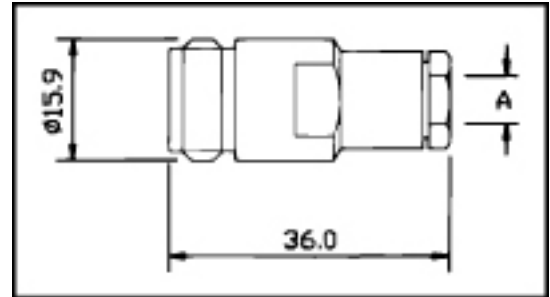
CONTENTS

SEARCH

PREVIOUS

NEXT

Straight Jack Clamp Type

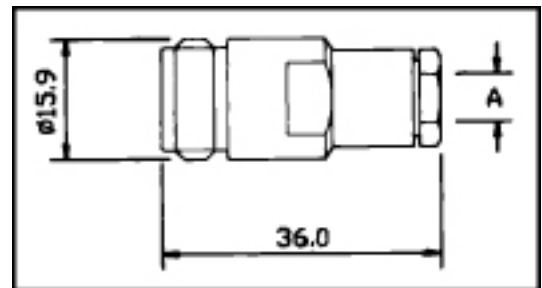


N

Order Code	Impedance Ohms	Cable Group RG/U	A Dia
SC3 SR 02	50	55, 58, 141, 142, 223, 303, 400	5.6

For Cable Assembly Refer Fig. C 09

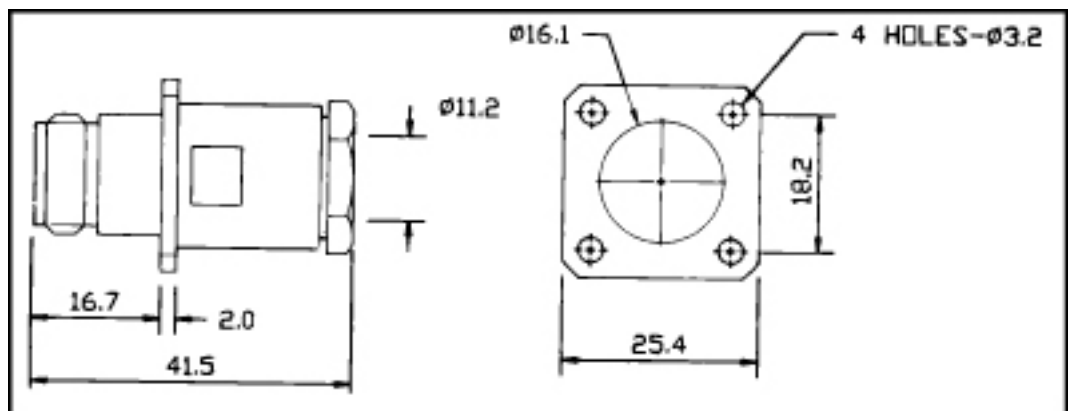
Straight Jack for Semi Rigid Cable



Order Code	Impedance Ohms	Cable Group RG / U	A Dia
SC3 SR 03	50	402	217

For Cable Assembly Refer Fig. C 13

Panel Jack Clamp Type



Order Code	US-MIL No	Impedance Ohms	Cable Group RG/U
SC3 PR 01	UG 22 / U	50	165, 213, 214, 215, 225

For Cable Assembly Refer Fig. C 08



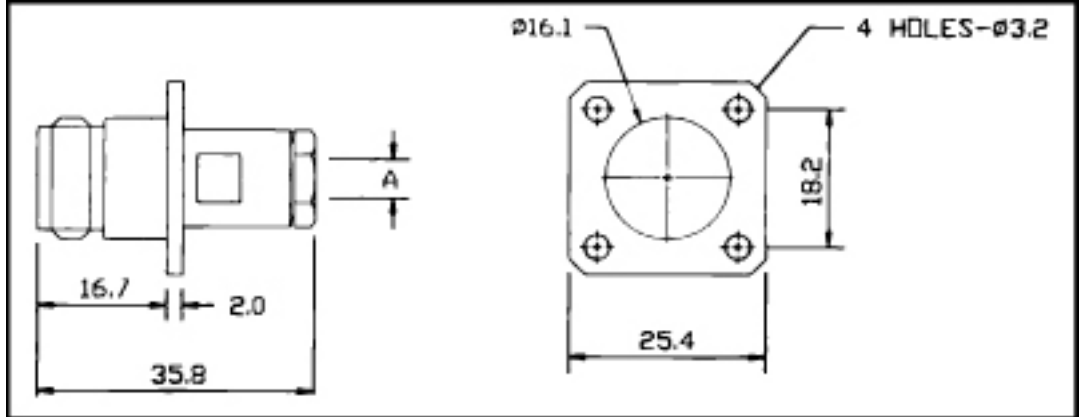
CONTENTS

SEARCH

PREVIOUS

NEXT

**Panel Jack
Clamp Type**



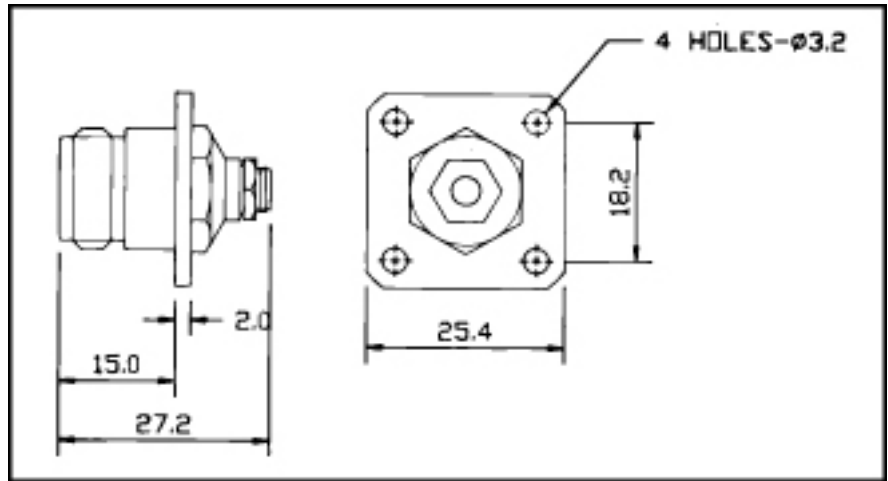
Order Code	Impedance Ohms	Cable Group RG/U	A Dia
SC3 PR 02	50	55, 58, 141, 142, 223, 303, 400	5.6

For Cable Assembly Refer Fig. C 09

**Panel Jack for
Semi Rigid Cable**

Order Code	Impedance Ohms	Cable Group RG/U
SC3 PR 03	50	402

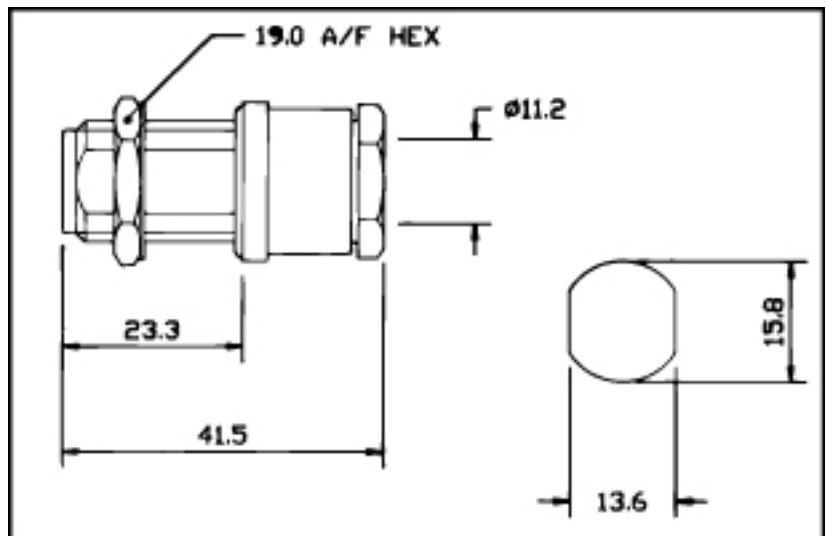
For Cable Assembly Refer Fig. C 11



**Bulk Head Jack
Clamp Type**

Order Code	US-MIL No	Impedance Ohms
SC3 BR 01	50	165, 213, 214, 215, 225

For Cable Assembly Refer Fig. C 08

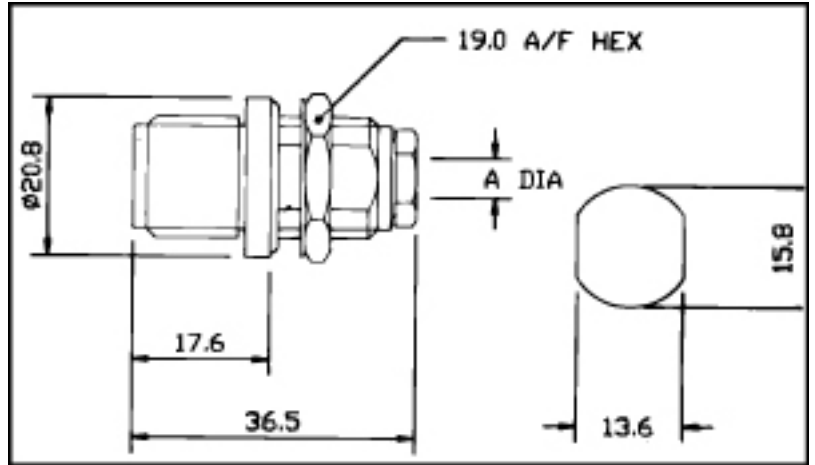




**Bulk Head Jack
Clamp Type**

Order Code	Impedance Ohms	Cable Group RG/U	A Dia
SC3 BR 02	50	55, 58, 141, 142, 223, 303, 400	5.6

For Cable Assembly Refer Fig. C 09

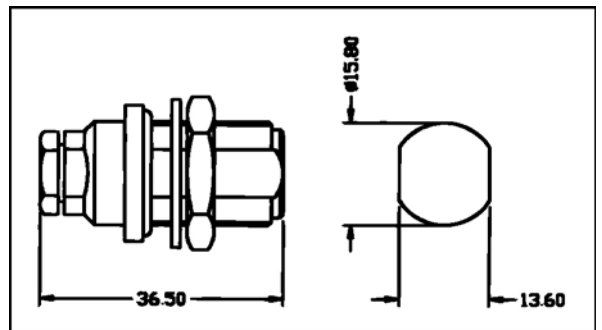


N

**Bulk Head Jack
Clamp Type**

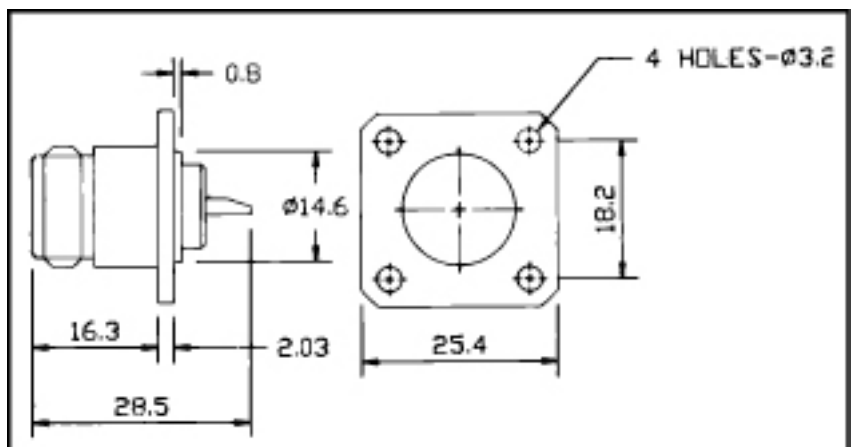
Order Code	Impedance Ohms	Cable Group RG/U
SC3 BR 02 F	50	55, 58, 141, 142, 223, 303, 400

For Cable Assembly Refer Fig. C 09



**Square Flange
Receptacle**

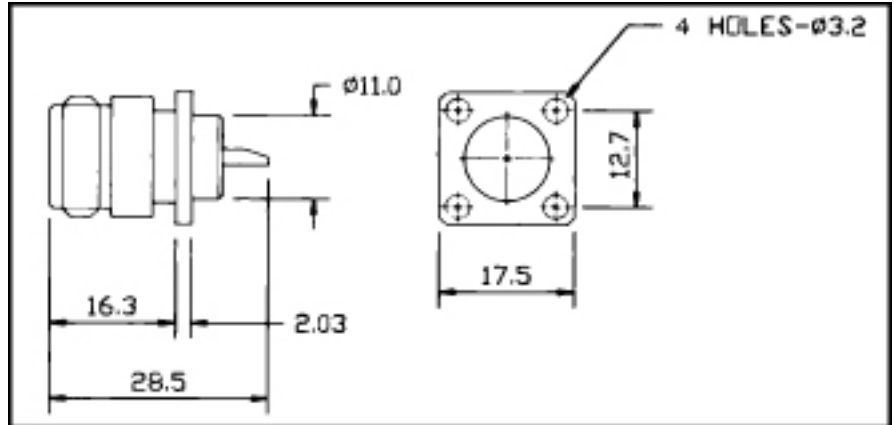
Order Code	Impedance Ohms
SC3 F 01	50





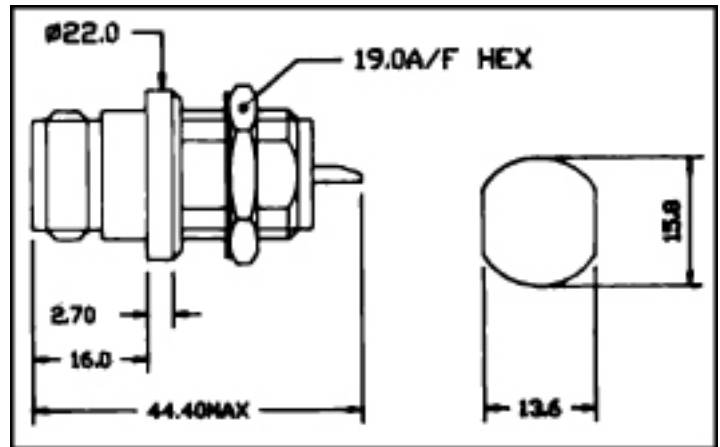
Square Flange Receptacle

Order Code	Impedance Ohms
SC3 F 02	50



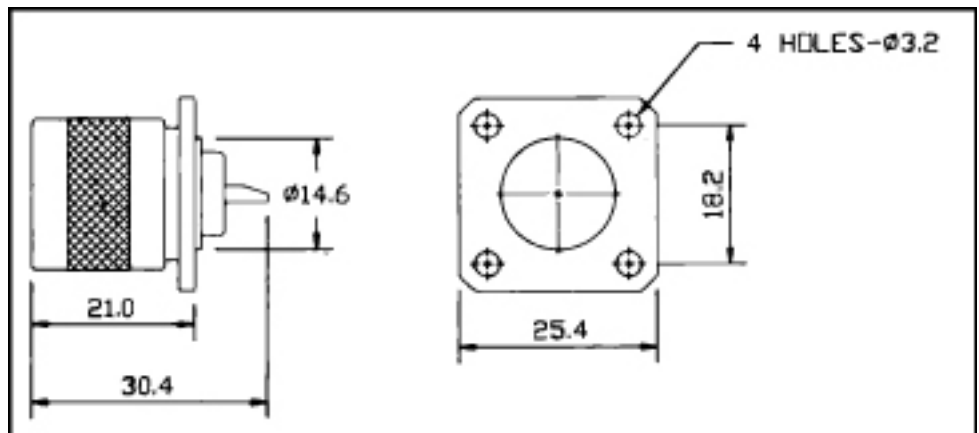
Bulk Head Receptacle

Order Code	Impedance Ohms
SC3 F 03	50



Square Flange Receptacle, Plug

Order Code	Impedance Ohms
SC3 PM 01	50





CONTENTS

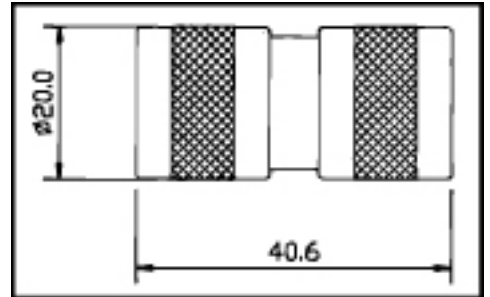
SEARCH

PREVIOUS

NEXT

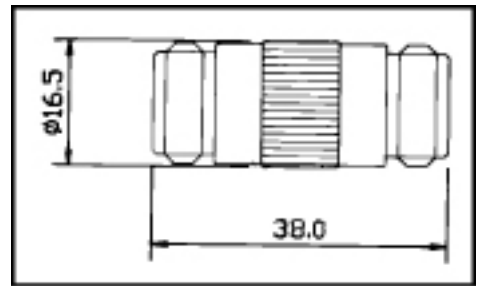
IN-SERIES ADAPTORS

Plug - Plug



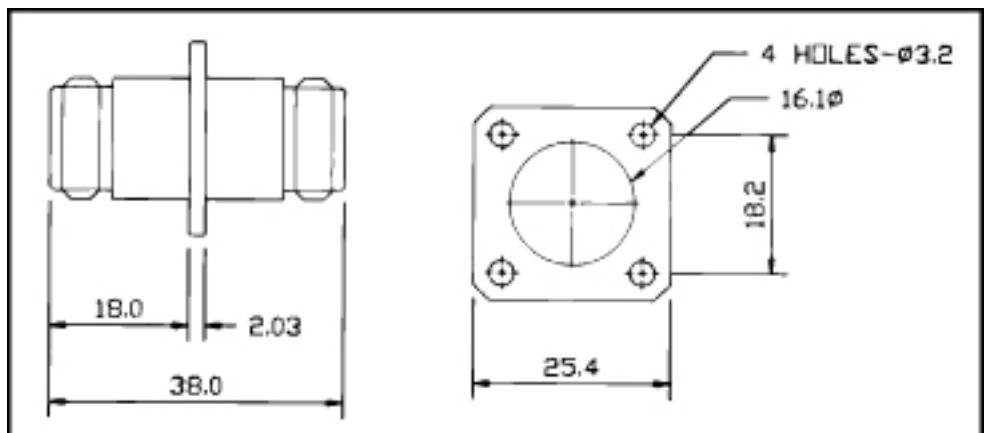
Order Code	US - MIL No	Impedance Ohms
SC3 MM 01	UG 57 / U	50

Jack - Jack



Order Code	US - MIL No	Impedance Ohms
SC3 FF 01	UG 29 / U	50

**Jack - Jack
Flange Mount**



Order Code	Impedance Ohms
SC3 FP 01	50

N



CONTENTS

SEARCH

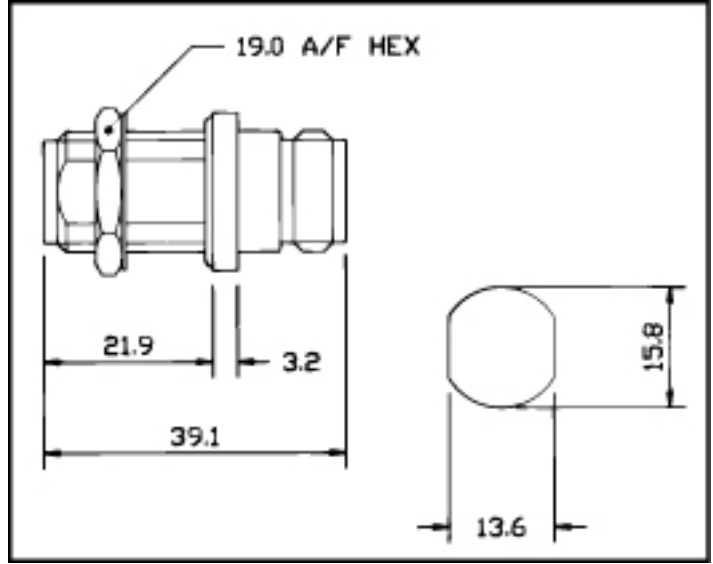
PREVIOUS

NEXT

**Jack - Jack
Bulk Head Mount**

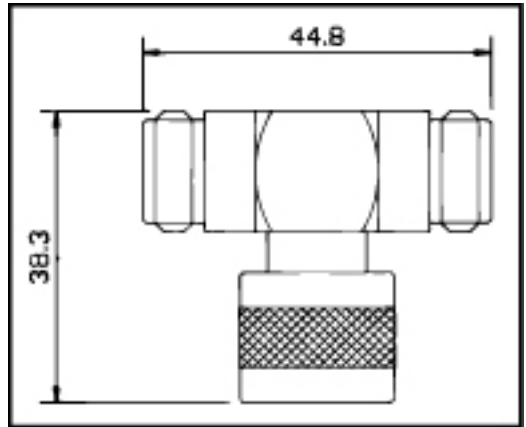
N

Order Code	Impedance Ohms
SC3 FB 01	50



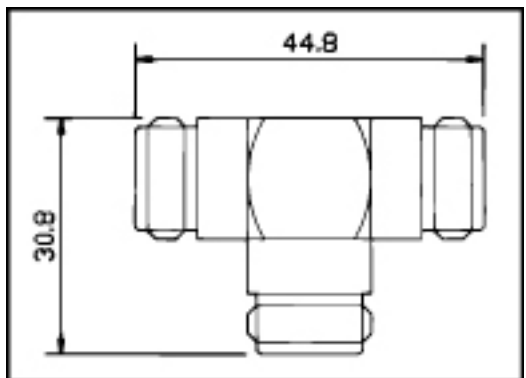
**T - Adaptor
Jack - Plug - Jack**

Order Code	US-MIL No	Impedance Ohms
SC3 T 01	UG 107 / U	50



**T-Adaptor
Jack - Jack - Jack**

Order Code	US-MIL No	Impedance Ohms
SC3 T 02	UG 28 / U	50





CONTENTS

SEARCH

PREVIOUS

NEXT

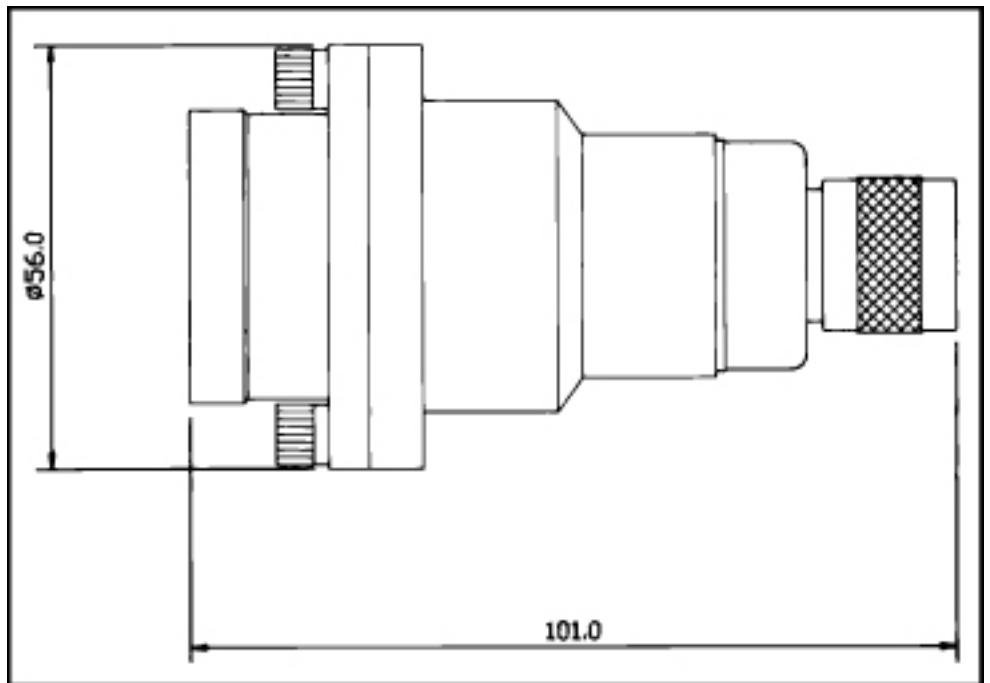
N

CONNECTORS FOR 7/8" LOW LOSS CABLE

Straight Plug

Order Code	Impedance Ohms	Applicable Cable
SC3 M 05	50	HF 7/8"

For Cable Assembly Refer Fig. C 10





CONTENTS

SEARCH

PREVIOUS

NEXT

N

Straight Jack

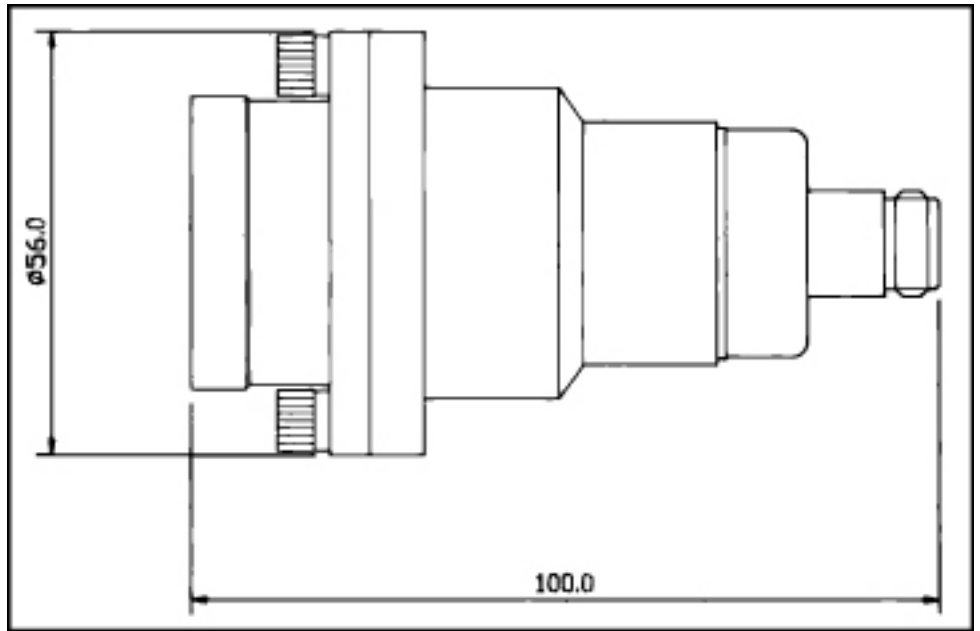
Order Code	Impedance Ohms	Applicable Cable
SC3 SR 05	50	HF 7/8"

For Cable Assembly Refer Fig. C 10

Connector Details

Contact surfaces : Silver Plated

Cable inner conductor anchoring by thread : M8 x 0.75





CONTENTS

SEARCH

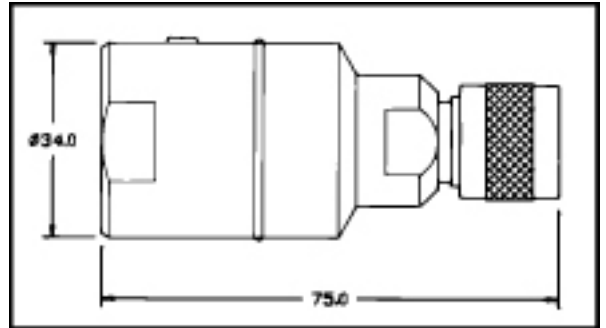
PREVIOUS

NEXT

Straight Plug

Order Code	Impedance Ohms	Cable Group RG/U
SC3 M 07	50	HF 7/8"

Cable Assembly C-12

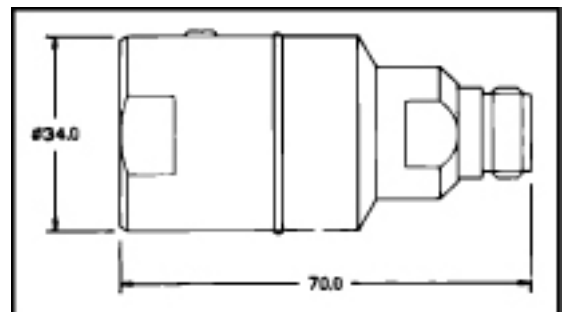


N

Straight Jack

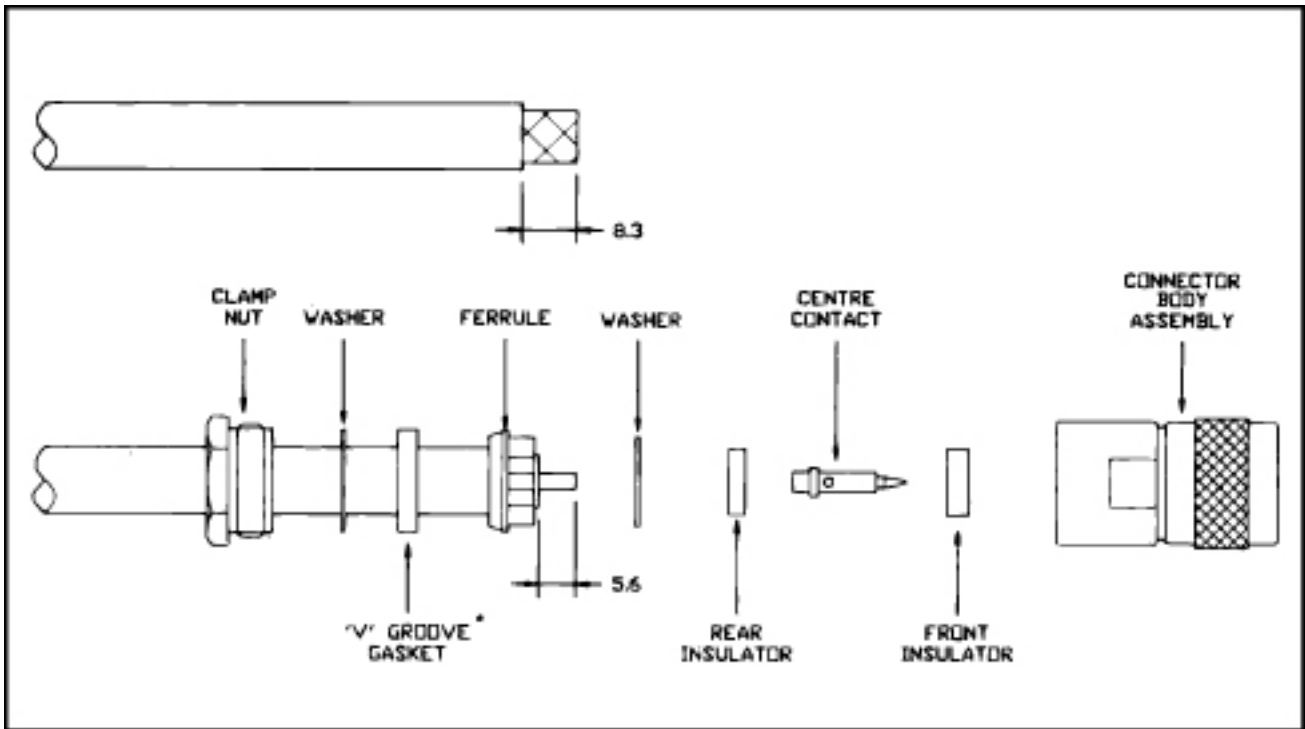
Order Code	Impedance Ohms	Cable Group RG/U
SC3 SR 07	50	HF 7/8"

Cable Assembly C-12



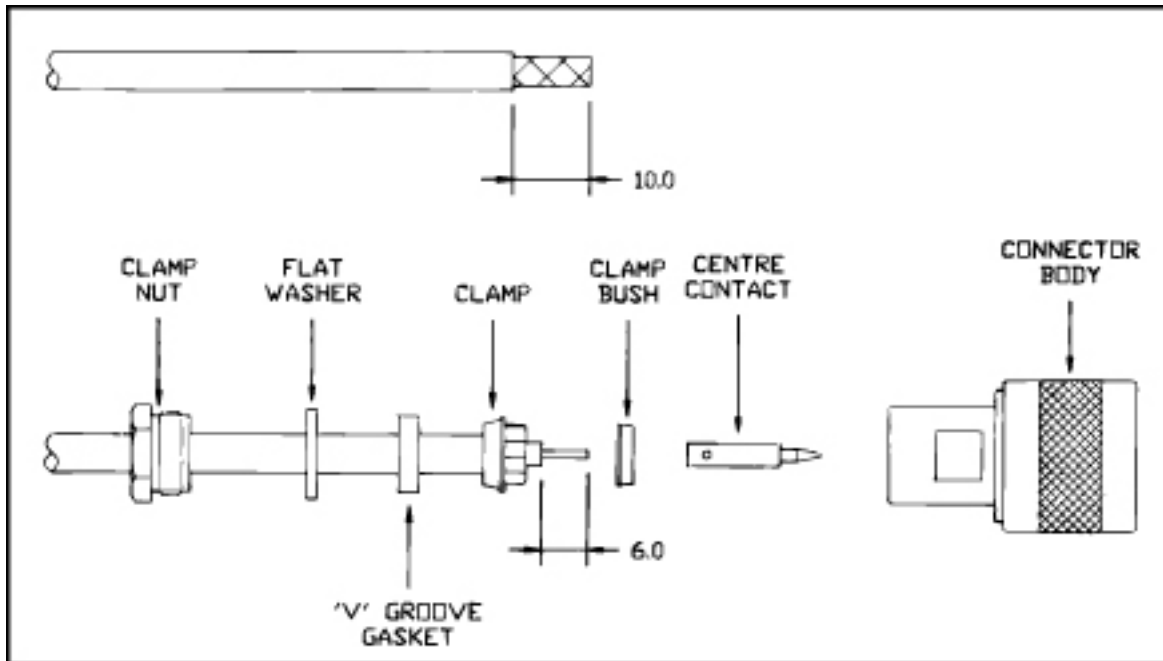


N



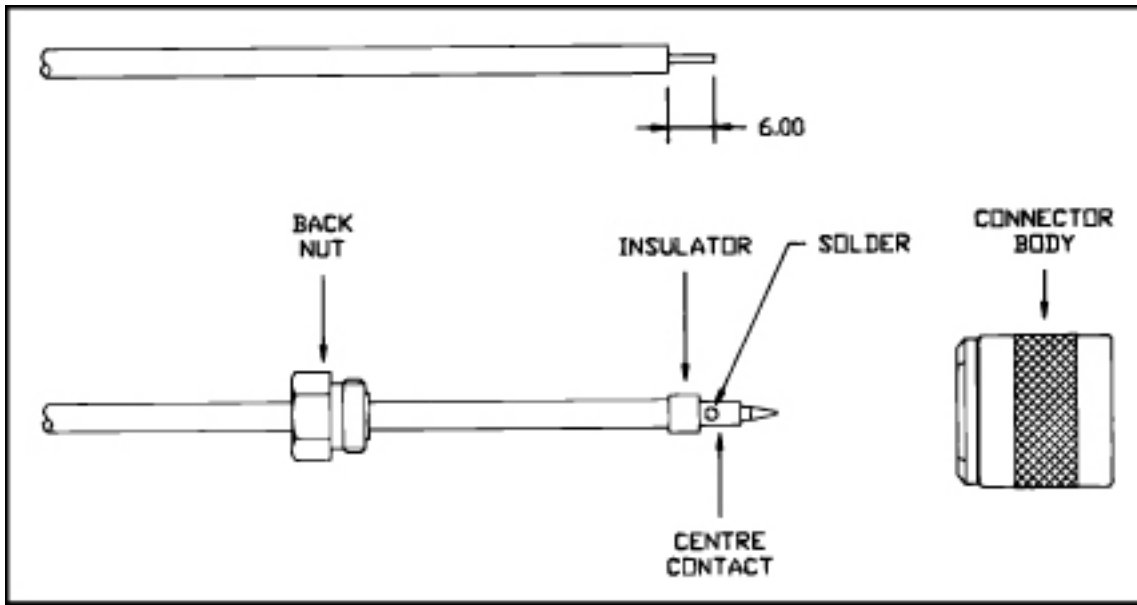
C 01

1. Insert clamp out, flat washer and 'V' – Groove gasket over cable.
2. Trim the cable as per dimensions shown in the figure and insert ferrule over braid so that the inner collar butts against the outer sheath of cable.
3. Comb out the braid and fold them over ferrule as shown in the figure and trim the excess braid.
4. Fit the rear insulator over the rear end of centre contact and insert the centre conductor of cable into the centre contact. Hold the washer over the dielectric. Solder the centre contact firmly to the cable.
5. Slide the front insulator, 'V' – Groove gasket and washer inside the body of the connector. Tighten the centre assembly with the clamp nut till the 'V' – Groove gasket shears and grips the cable firmly.



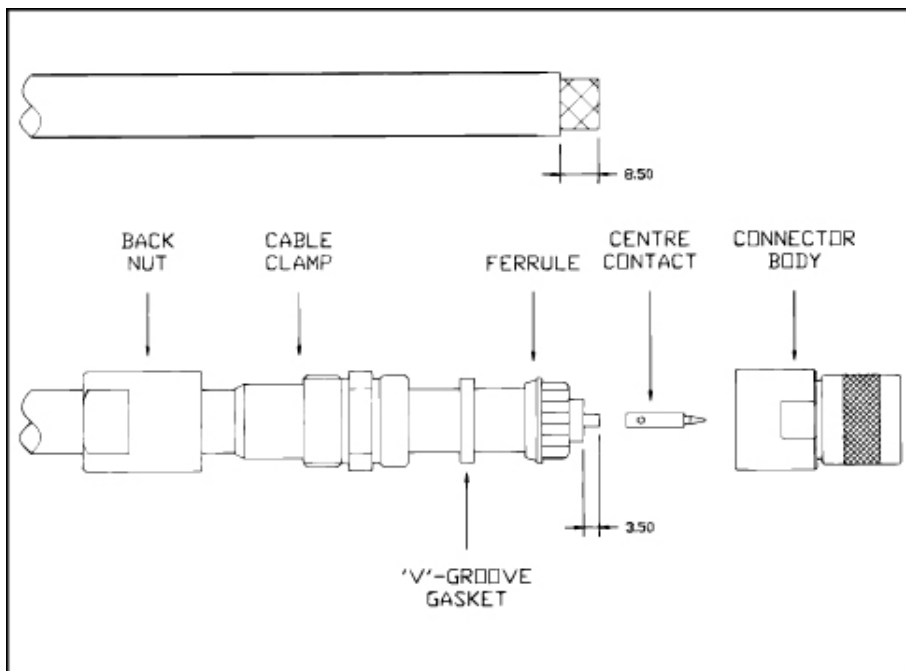
C 02

1. Insert clamp nut, flat washer and 'V' – Groove gasket over cable.
2. Trim the cable as per dimensions shown in the figure and insert ferrule over braid so that the inner collar butts against the outer sheath of cable.
3. Comb out the braid and fold them over ferrule as shown in the figure and trim the excess braid.
4. Fit the rear insulator over the rear end of centre contact and insert the centre conductor of cable into the centre contact. Hold the clamp bush over the dielectric. Solder the centre contact firmly to the cable.
5. Slide the front insulator, 'V' – Groove gasket and washer inside the body of the connector. Tighten the centre assembly with the clamp nut till the 'V' – Groove gasket shears and grips the cable firmly.



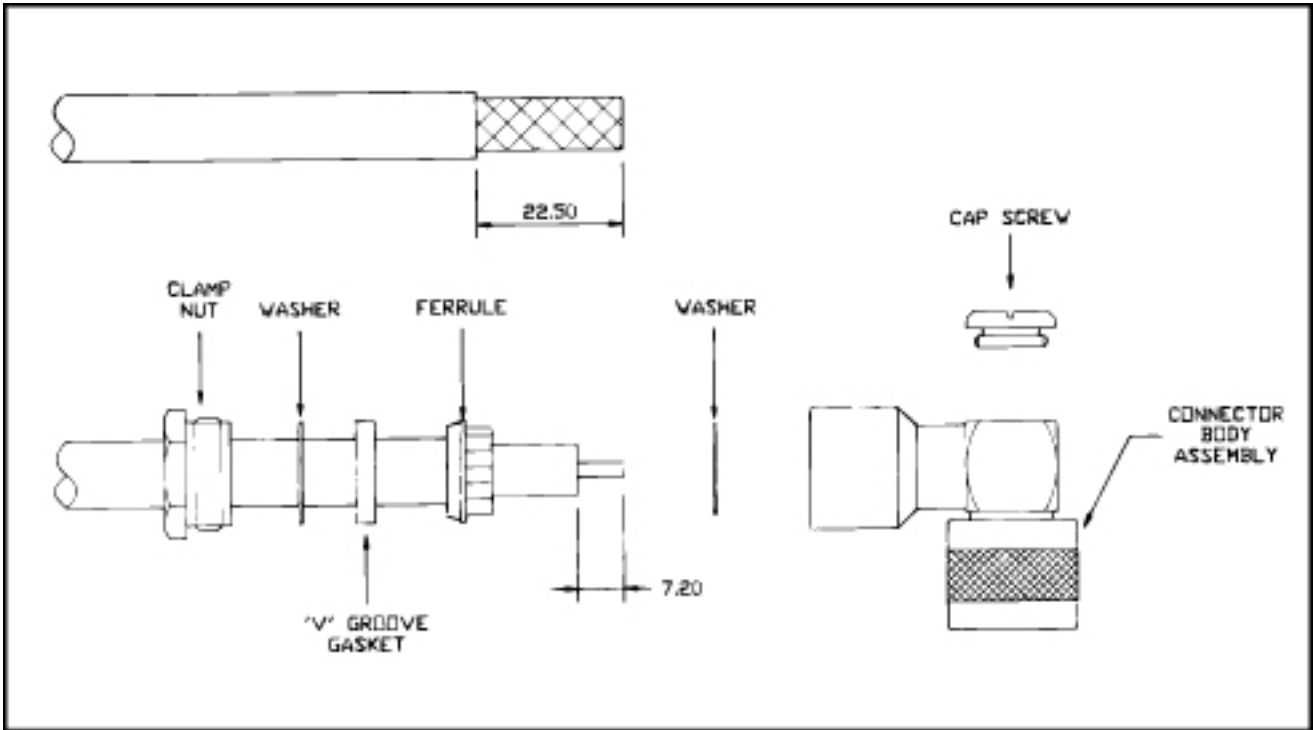
C 03

1. Strip the cable as per dimension shown in figure.
2. Fit the rear insulator over the rear end of centre contact and insert the centre conductor of cable into the centre contact. Solder the centre contact firmly to the cable.
3. Slide the back nut till it butts against the insulator. Solder the back nut and the outer conductor of cable.
4. Insert the sub-assembly into the connector body and tighten the nut.



C 04

1. Insert clamp nut, flat washer and 'V'- Groove gasket over cable.
2. Trim the cable as per dimensions shown in the figure and insert ferrule over braid so that the inner collar butts against the outer sheath of cable.
3. Comb out the braid and fold them over ferrule as shown in the figure and trim the excess braid.
4. Insert the centre conductor of cable into the centre contact. Solder the centre contact firmly to the cable.
5. Insert the sub-assembly into the connector body and tighten the cable and back nut.

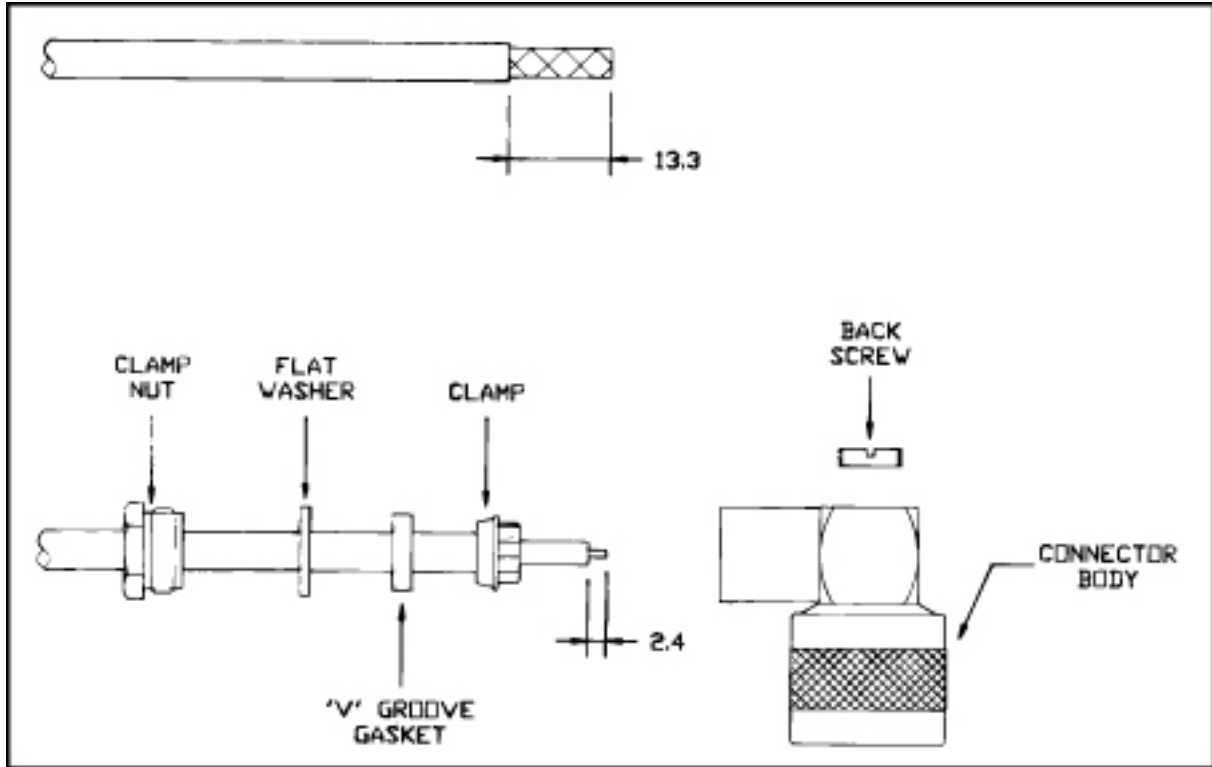


C 05

1. Insert clamp nut, flat washer and 'V' – Groove gasket over cable.
2. Trim the cable as per dimensions shown in the figure and insert ferrule over braid so that the inner collar butts against the outer sheath of cable.
3. Comb out the braid and fold them over ferrule as shown in the figure and trim the excess braid. Remove the dielectric as per the dimension shown in figure.
4. Insert the centre conductor of cable into the connector body and solder the centre conductor of cable and centre contact.
5. Tighten the entire assembly with the clamp nut till the 'V' – groove gasket shears and grips the cable firmly.
6. Fit the cap screw.



N



C 06

1. Insert clamp nut, flat washer and 'V' – Groove gasket over cable.
2. Trim the cable as per the dimensions shown in the figure and insert ferrule over braid so that the inner collar butts against the outer sheath of cable.
3. Comb out the braid and fold them over ferrule as shown in the figure and trim the excess braid. Remove the di-electric as per the dimension shown in figure.
4. Insert the centre conductor of cable into the connector body and solder the centre conductor of cable and centre contact.
5. Tighten the entire assembly with the clamp nut till the 'V' – Groove gasket shears and grips the cable firmly.
6. Fit the cap screw.

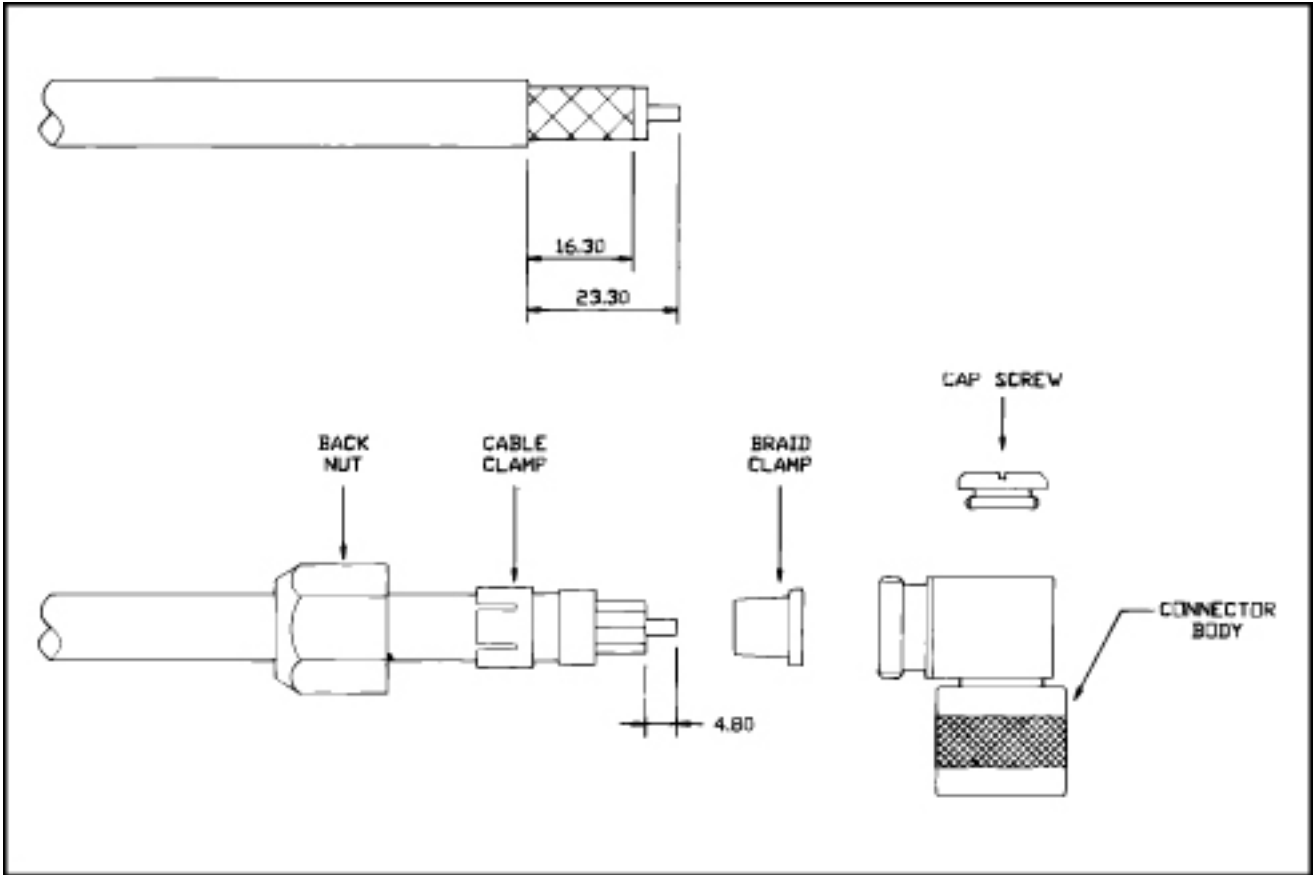


CONTENTS

SEARCH

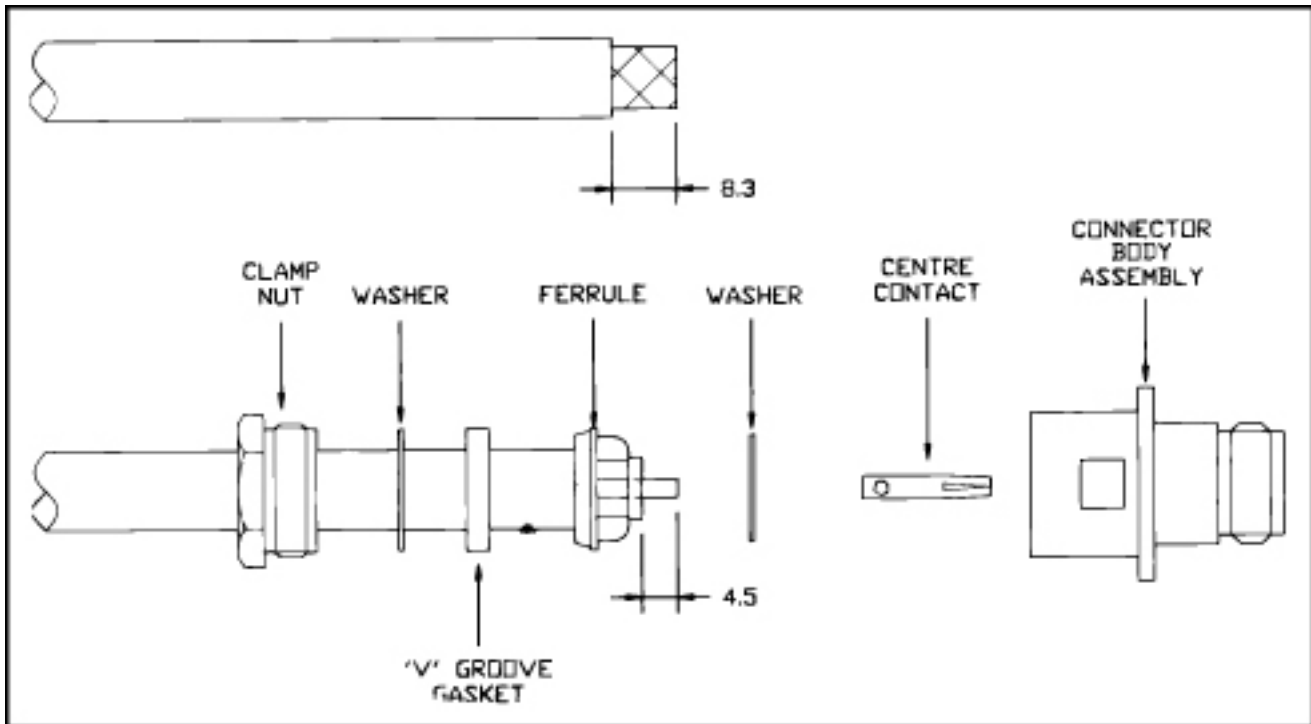
PREVIOUS

NEXT



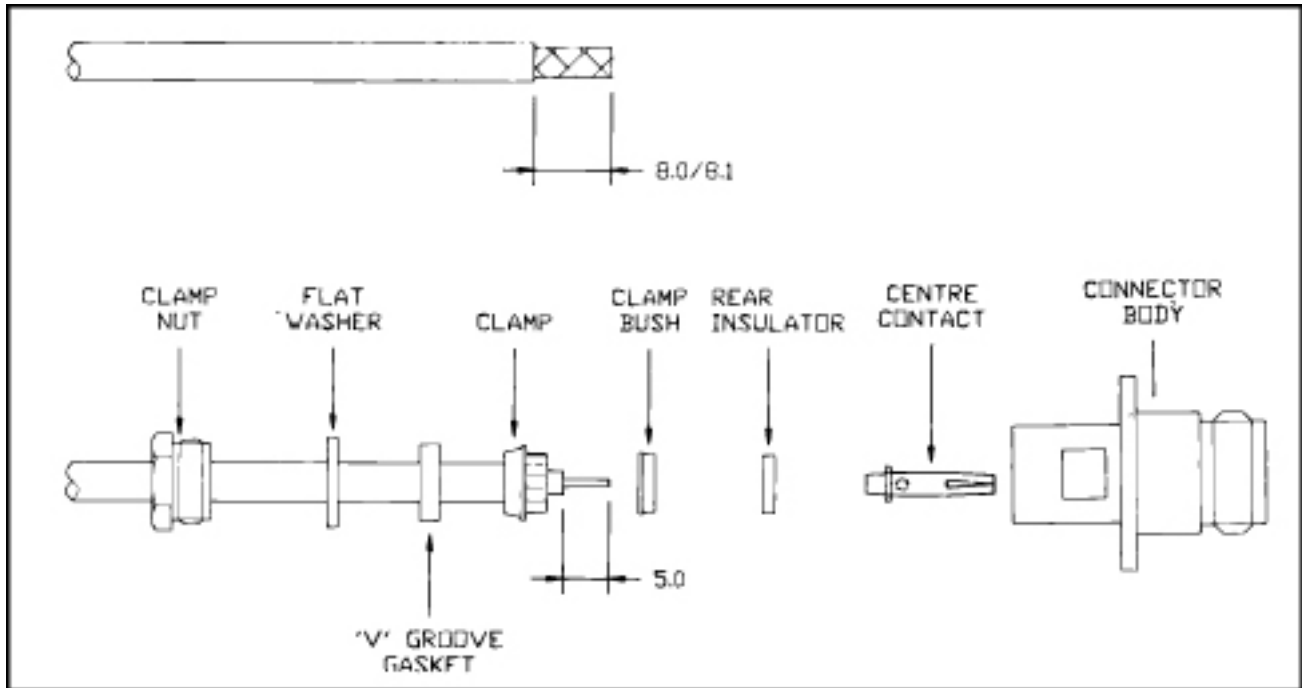
C 07

1. Strip the cable as per dimensions shown in figure.
2. Insert the back nut the clamp over the cable so that the inner collar of the cable clamp butts against the outer sheath of the cable and fold back the braid over the cable clamp.
3. Insert the sub-assembly into the connector body and solder the centre conductor of cable and centre contact.
4. Tighten the entire assembly with the back nut,.
5. Fit the cap screw.

**C 08**

1. Insert clamp nut, flat washer and 'V' -Groove gasket over cable.
2. Trim the cable as per dimensions shown in the figure and insert ferrule over braid so that the inner collar butts against the outer sheath of cable.
3. Comb out the braid and fold them over ferrule as shown in the figure and trim the excess braid.
4. Insert the washer over the di-electric. Insert the centre conductor of cable into the centre contact. Solder the centre contact firmly to the cable.
5. Slide the front insulator, 'V'-Groove gasket and washer inside the body of the connector. Tighten the centre assembly with the clamp but till the 'V'-Groove gasket shears and grips the cable firmly.

Note: Panel Jack is shown. All other details are relevant for Straight Jack (03SR01) and Bulkhead Jack (03BR01).

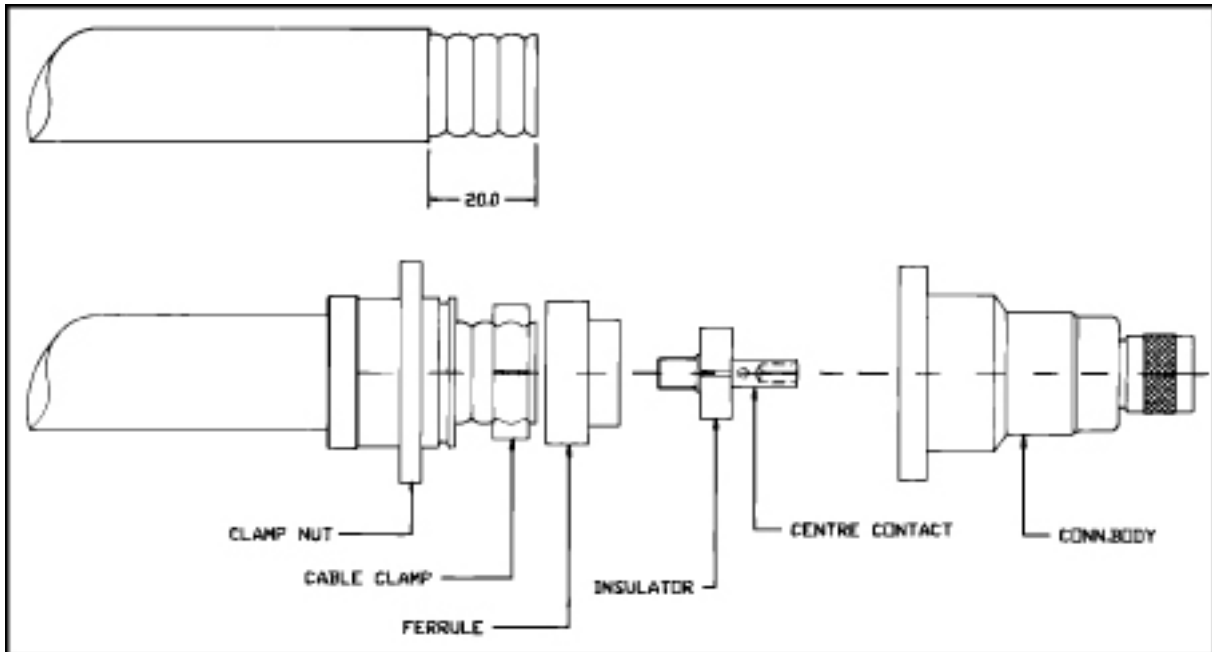
**C 09**

1. Insert clamp nut, flat washer and 'V'-Groove gasket over cable.
2. Trim the cable as per dimensions shown in the figure and insert ferrule over braid so that the inner collar butts against the outer sheath of cable.
3. Comb out the braid and fold them over ferrule as shown in the figure and trim the excess braid.
4. Insert the clamp bush over the di-electric.
5. Fit the rear insulator over the rear end of centre contact and insert the centre conductor of cable into the centre contact. Solder the centre contact firmly to the cable.

Note: Panel Jack shown. All other details are relevant for Straight Jack (03SR02), Bulkhead jack (03BR02).



N



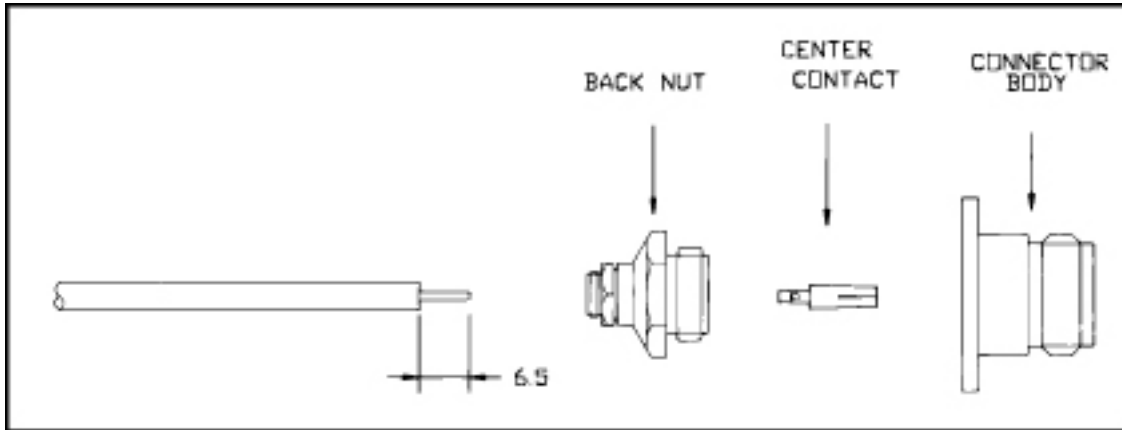
C 10

1. Strip the cable as shown above and thread the inner conductor with M9 x 0.75 pitch thread.
2. Slide the cable nut to the cable.
3. Fix the cable clamp as shown above.
4. Slide the ferrule over the cable clamp.
5. Screw the centre contact to the centre conductor of the cable and tighten with a small piece of rod. (Drill is provided for this purpose in the centre contact).
6. Fix the insulator over the centre contact and slide the connector body over the insulator.
7. Push the cable into the connector body fully and tighten the four allen cap screws evenly.

Note : i) M9 x 0.75 pitch thread for the Andrew cable.

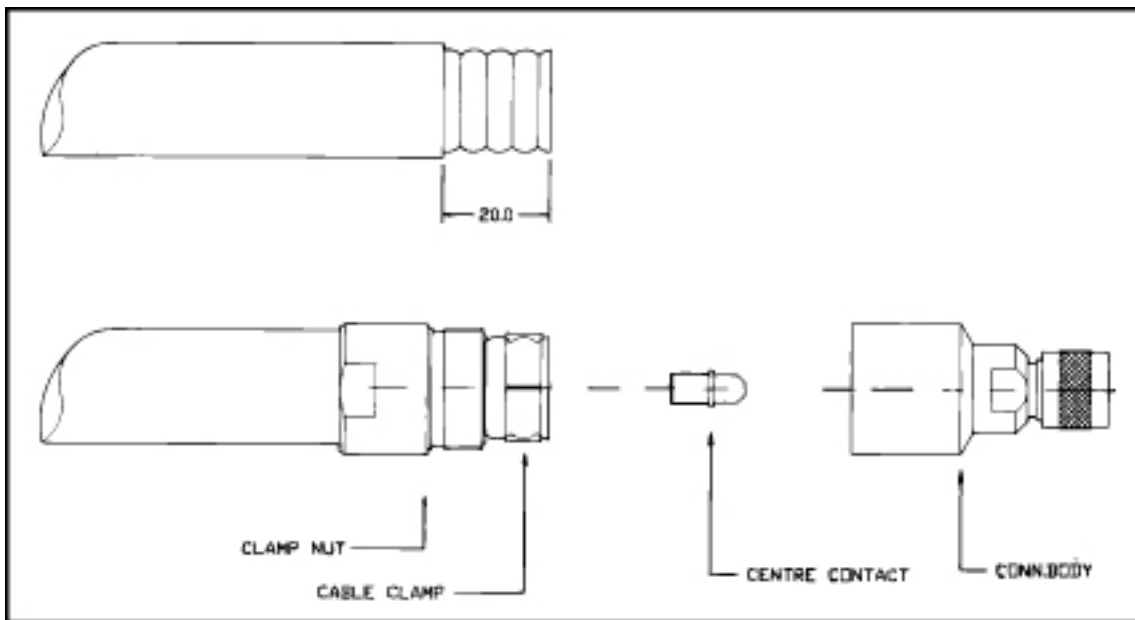
M8 x 0.75 pitch thread for cellflex cable.

ii) Plug is shown. All other details are relevant for Straight Jack (03SR05).



C 11

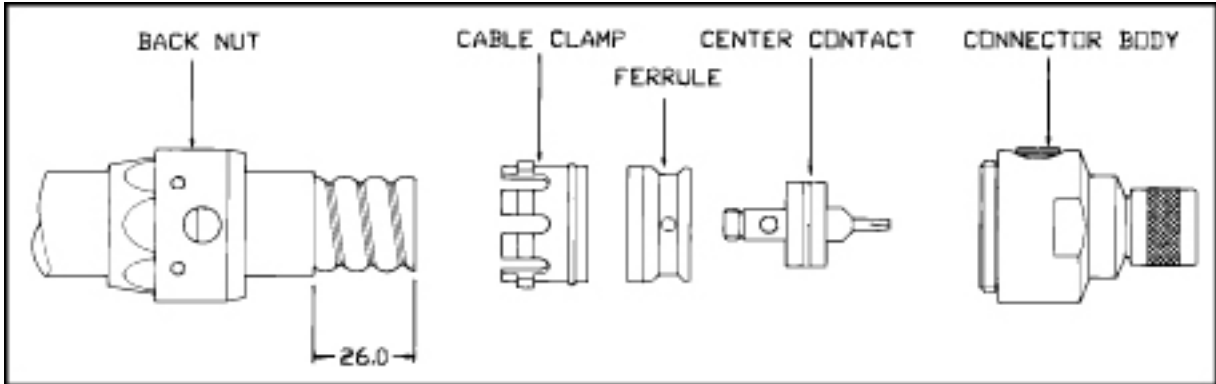
1. Strip the cable as dimension shown above.
2. Insert the back nut over the cable.
3. Solder the center contact firmly to the cable.
4. Insert the sub-assembly into the connector body and tighten the nut.



C 12

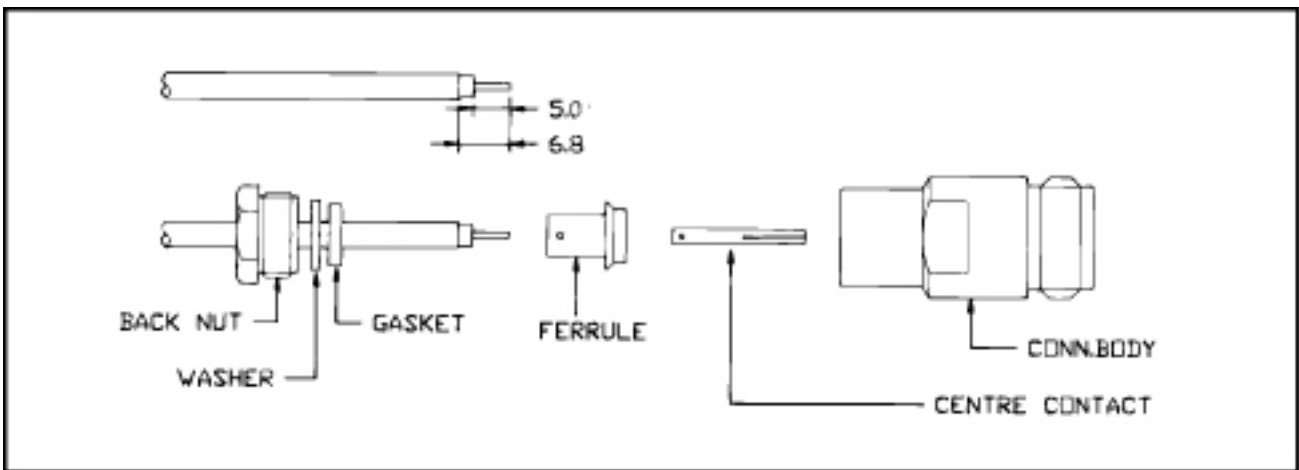
1. Strip the cable as shown above and thread the inner conductor with M9 x 0.75 pitch thread.
2. Slide the cable nut to the cable.
3. Fix the cable clamp as shown above.
4. Screw the centre contact to the centre conductor of the cable and tighten with a screw driver.
5. Push the cable into the connector body. Fully tighten the clamp nut and connector body with the help of spanner.

Note : (i) M9 x 0.75 pitch thread for Andrew cable.
M8 x 0.75 pitch thread for cellflex cable.
(ii) Plug is shown. All other details are relevant for Straight Jack (03SR05).



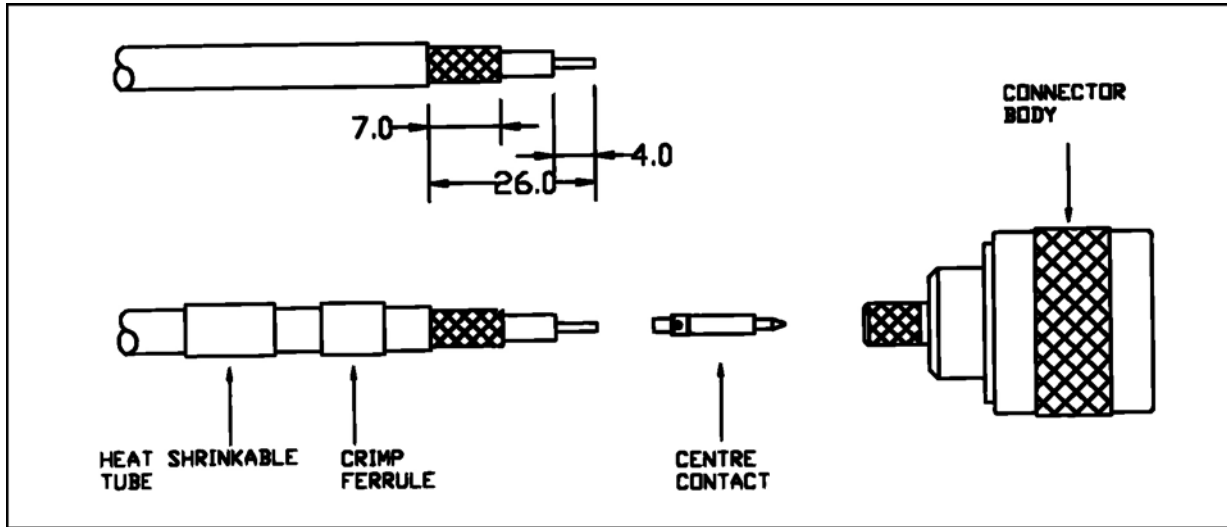
C 13

1. Strip the cable as shown above and thread the inner conductor with M9 x 0.75 pitch thread.
2. Slide the back nut over the cable.
3. Fix the cable clamp
4. Insert the ferrule and the center contact to the clamp
5. Screw the center contact to the centre conductor of the cable.
6. Push the cable into the connector body. Fully tighten the back nut and connector body with help of spanner



C 14

1. Strip the cable as per dimension shown in Figure.
2. Insert the Black nut, washer, gasket and ferrule over the cable.
3. Solder the centre contact firmly to the cable.
4. Insert the sub-assembly into the connector body and tighten the nut.



C 15

1. Slide the heat shrinkable tube and the ferrule over cable.
2. Strip the cable as per dimensions shown in the figure.
3. Fit the centre contact over the lead of the cable and solder the centre contact firmly to the cable.
4. Insert the sub-assembly into the body and slide the ferrule until it butts against the body and crimp the ferrule.
5. Shrink the heat shrinkable tube over the ferrule.